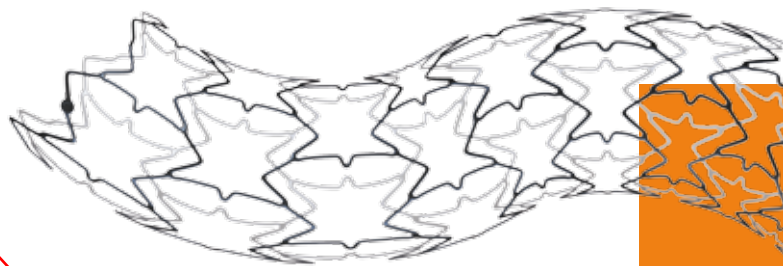


Radix2

RENAL BALLOON EXPANDABLE STENT

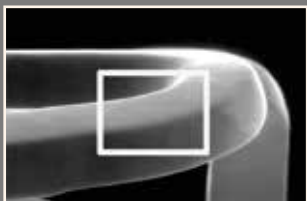
Stentai inkst arterijoms dengti anglimi

Radix2 is a stent with a progressive multicellular design for treatment of the renal artery.



- Excellent scaffolding proximally and good flexibility distally thanks to the unique progressive closed cell design

stento distalinis galas lankstesnis, negu proksimalinis



- Proven biocompatibility enabled by the Carbofilm™ coating, accelerating the rate of endothelization and strut coverage, reducing thrombogenicity



- Platinum markers and no stent foreshortening design allow unmatched placement accuracy and visualization

galima pasirinkti 5,0; 6,0 arba 7,00 mm diametro stentus

TECHNICAL DATA

PERIPHERAL STENT	
Stent diameters:	5 - 7 mm
Stent lengths:	12 & 17 mm
Stent material:	Stainless steel AISI 316 LVM
Strut thickness:	70 - 80 µm
Strut surface coating:	Carbofilm™
2 platinum radiopaque markers at stent ends	
No stent foreshortening upon expansion	

pagaminti iš kobalto-chromo arba lygiaver io lydinio ir padengti gryna anglimi

galima pasirinkti 12 arba 17 mm ilgio stentus

DEVICE SPECIFICATIONS	
Rapid Exchange (RX)	
Introducer sheath compatibility:	5F
Guiding catheter compatibility:	6F
Guidewire compatibility:	0.018"
Usable Catheter Length - UCL:	75 & 150 cm
Nominal Pressure:	7 - 8 atm
Rated Burst Pressure:	15 atm

ant stent 2 rentgenokontrastiniai žymenys
tyrimais patvirtintas sutrump jimas išpl timo metu – 0 proc

suderinami su " 5 F introduseriais

vertintas plyšimo sl gis (angl. RBP) • 15 atm.

RX arba lygiavert sistema, suderinama su 0,018" storio viela;

Radix2

RENAL BALLOON EXPANDABLE STENT

galima pasirinkti 75 arba 150 cm ilgio vedimo kateterius

ORDER INFORMATION RADIX2

USABLE CATHETER LENGTH 75 CM

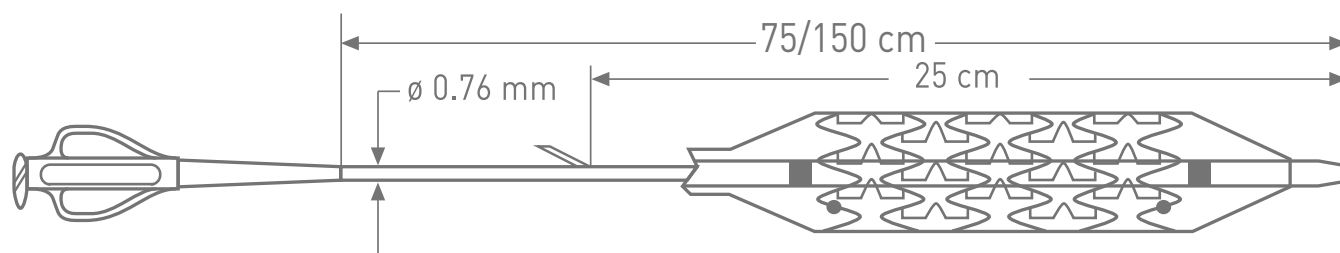
Ø (mm)	L (mm)	12	17
5.00		ICRW5012S	ICRW5017S
6.00		ICRW6012S	ICRW6017S
7.00		ICRW7012S	ICRW7017S

galima pasirinkti 5,0; 6,0 arba 7,00 mm diametro stentus

galima pasirinkti 12 arba 17 mm ilgio stentus;

USABLE CATHETER LENGTH 150 CM

Ø (mm)	L (mm)	12	17
5.00		ICRW5012L	ICRW5017L
6.00		ICRW6012L	ICRW6017L
7.00		ICRW7012L	ICRW7017L



www.alvimedica.com

Please contact your local sales representative for product availability.

Not for sale in the USA and Japan.

The images shown within this document are of a purely illustrative nature and are not intended to depict reality.

Please consult product labels and package inserts for indications, contraindications, hazards, warnings, cautions and instruction for use.

Manufactured by: CID S.p.a., Strada per Crescentino, sn - 13040 Saluggia (VC) Italy

©2014, Alvimedica. All Rights Reserved.



back to life!